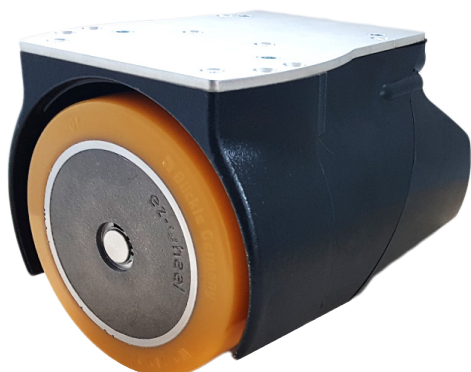


ezW150I



- ✓ ez-Wheel® autonomous wheel **ezW150I** - Series 150
- ✓ developed for intensive use in industry
- ✓ recommended for load-bearing mounting
- ✓ suitable for:
 - industrial trolleys
 - rolling equipment for factories
 - mobile workstations and tools
 - (...)



Technical characteristics

Diameter	150 mm
Type of Tyre	92 sh.A Blickle® Extrathane - Flat profile
Speed range (traction)	0 to 5 km/h
Peak pushing effort	35 daN Moves 1000 kg
Nominal performance	15 daN at 4 km/h
Maximum rolling speed	8 km/h
Battery capacity	0/70/140 Wh
Option(s)	Parking brake /B Additional battery

Component specifications

Motor



Technology	BLDC PM
Gearbox	2-stage helical
Indicative lifespan*	3 000 h / 10 000 km 1 000 000 starts/stops
Nominal speed	166 rpm (4,7 km/h)
Nominal power	170 W (S3, 15% duty cycle, 5 min max)
Peak torque	27 Nm

Battery



Electrochemistry	Ni-MH
Energy	70 Wh (1 battery) 140 Wh (2 batteries)
Indicative lifespan*	2-3 years
Recharge mode	Charger or external power
Minimum charging time*	1.5 hours (to 90%)

Interface



Wired	Analog or Serial / CAN
Wireless	-

Conditions of use



Temperatures	-10 to +40 °C
IP index	IP43
Maintenance period*	2-3 years

The wheel can be used inside or outside, over a wide range of temperatures. The components – including the battery – do not need any inspection or maintenance over the product's whole lifespan.

Weight



Wheel weight	10 kg
Maximum vertical load	400 kg up to 5 km/h

Thanks to the reinforced cast iron housing and wheel hub, the Series 150 wheel can withstand knocks and severe vibration and enables the wheel to carry some load.

ez-Wheel products are guaranteed 1 year from the date of purchase and 2 years against production defects. Consult the general conditions of sale for more information.

All values are subject to changes without prior notice.

*: Values for reference, based on standard condition testing, may vary with different application cases.

ez-wheel.com