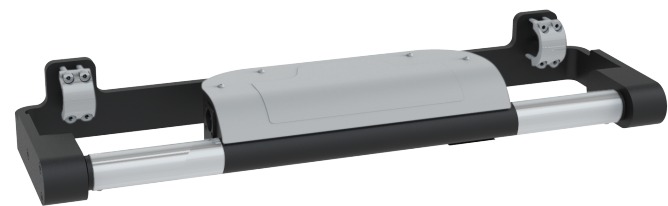


ezRPP/UC

The ez-Wheel® Push pull sensitive control **ezRPP/UC** ensures a natural handling of equipment thanks to sensitive sensors, ergonomic shapes and intuitive use.



- ✓ developed for the automotive sector
- ✓ bi-directional and ergonomic control
- ✓ suitable for:
 - towed trailers



Technical features

Functions	Pressure sensors in push/pull directions
	On/off button
	Progressive accelerator
	Battery and status indicator
	Magnetic connector
Protection Index	IP54
Communication	Serial
	Wireless
Compatibility	✓ ezW300I/CCR

Developed for the automotive

ezRPP/UC is an intuitive control bringing best practices in lean manufacturing, co-designed with automotive players, for automotive players.



Functions details

- [+] The interface remotely displays the battery level of the wheel and the system status.
- [+] Its magnetic connector ensures a quick charger connection when coming back to the parking station.

ez-Wheel products are guaranteed 1 year from the date of purchase and 2 years against production defects. Consult the general conditions of sale for more information.

All values are subject to changes without prior notice.